

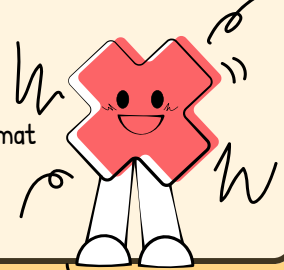
# Multiplication Tables Check

2026  
KS2  
Year 4

A GUIDE FOR PARENTS

## WHAT IS IT?

- Children answer multiplication questions up to  $12 \times 12$ , with greater emphasis on the 6, 7, 8, 9 and 12 times tables, as these are generally the most difficult to recall
- The check is online and completed on screen
- It contains 25 questions, with 6 seconds to answer each one
- There is a 3-second pause between each question before the next one appears
- Before the check, children can answer 3 practice questions to become familiar with the format
- Each check usually takes less than 5 minutes per child
- There are multiple versions of the check - each question is generated randomly
- There is no official pass mark or threshold



## WHO DOES IT?

- The Multiplication Tables Check is statutory for all Year 4 pupils in England
- Children do not need to re-sit the check if they do not achieve a high score
- Schools will share each child's result with parents or carers

## WHY IS IT IMPORTANT?

- The purpose is to see whether children can fluently recall multiplication facts up to  $12 \times 12$
- Secure times table knowledge helps children feel more confident in maths and supports later learning, including division, fractions and problem-solving
- The check helps schools identify children who may need extra support with times tables

## WHEN IS IT?

- In 2026, schools must complete the check between Monday 1st June and Friday 12th June
- Additional time can be used from Monday 15th June to Friday 19th June for children who were absent or unable to complete the check during the main window

## HOW TO HELP AT HOME

### Practise Little and Often

Short sessions of 5-10 minutes work best.

### Focus on Quick Recall

Children need to answer within a few seconds.

### Practise All Tables

Especially 6, 7, 8, 9 and 12.

### Use Games and Quizzes

To make practice fun.

### Use Real-life Maths

Cooking, shopping and travel can all involve multiplication.

Silly School Education

